



# ***SILVER WOLF***

## *EXPLORATION*

**DECEMBER 2025**

***Focus on Large, High-Grade Greenfields Discovery In Mexico***

**TSX.V:SWLF  
OTCQB:SWLFF**

## Cautionary Statement

The information contained herein contains "forward-looking statements" within the meaning of applicable securities legislation. Forward-looking statements relate to information that is based on numerous assumptions and involve known and unknown risks, uncertainties and other factors, including risks inherent in mineral exploration and development, which may cause the actual results, performance, or achievements of the Company to be materially different from any projected future results, performance, or achievements expressed or implied by such forward-looking statements. Such factors include, but are not limited to: general business, economic, competitive, political and social uncertainties; delay or failure to receive board, shareholder or regulatory approvals; and the uncertainties surrounding the mineral exploration industry. Such information contained herein represents management's best judgment as of the date hereof based on information currently available. The Company does not assume an obligation to update any forward-looking statement. Neither the TSX Venture Exchange nor its Regulation Services Provider (as that term is defined in the policies of the TSX Venture Exchange) accepts responsibility for the adequacy or accuracy of this news release.

**A Greener Future Through Resource Discovery.**



Expansive Road Systems  
Surrounding Flagship Property,  
Ana Maria.

# THE SILVER CASE

## Industrial Metal & Financial Instrument



Silver's unique properties make substitution difficult



Most electrically conductive metal



~**1,219M oz** forecasted consumption vs. **824M oz** production



Crucial for EV's & smart electronics



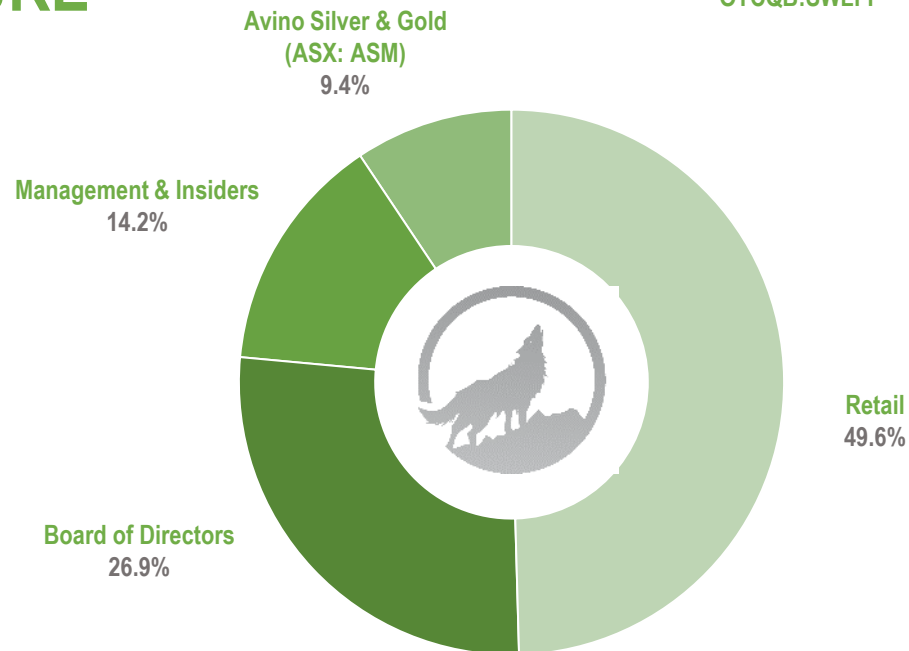
**82%** sourced from mining vs. **18%** from recycling

# SHARE & CAPITAL STRUCTURE

*Current Market Capitalization, CAD\$6M*

## Share Capitalization

Common Shares	46,010,621
Warrants (\$0.25)	3,476,731
Options	4,594,000
<b>Total Fully-Diluted Shares</b>	<b>54,081,352</b>



Share Ownership Structure

# THE ANA MARIA PROJECT

## *Leveraging Strengths - Focus on Mexico*

- 2500 Ha over 3 claims in a prolific **CRD district in Durango Mexico**
- Accessed off the highway on paved roads with easy access to power and water
- Signed Agreement with local Ejidos to establish best ESG practices early
- Option to acquire 100% Ownership – CAD\$150k remaining due 2025, no royalty
- **Avino Silver & Gold Mines Ltd (TSX: ASM) Synergies** = low overhead and drilling costs

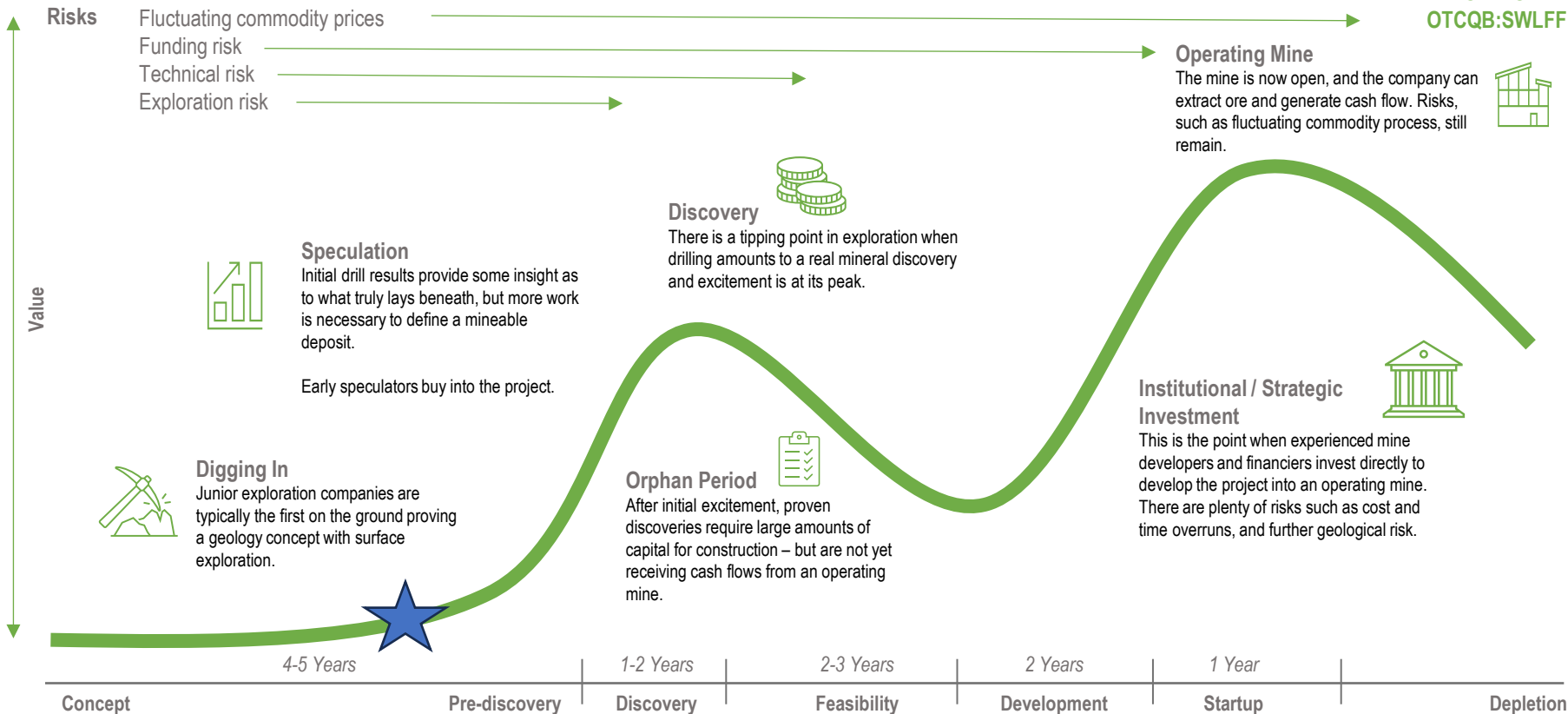


# LASSONDE CURVE

## SWLF CURRENT POSITION IN THE MINING LIFECYCLE

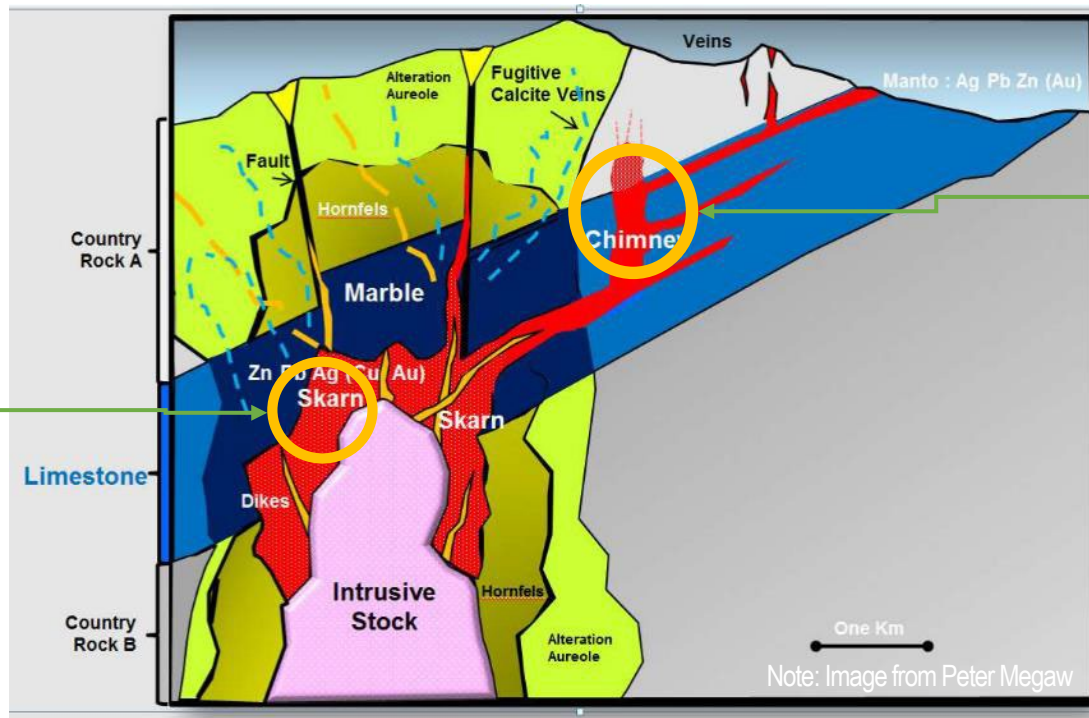


TSX.V:SWLF  
OTCQB:SWLFF



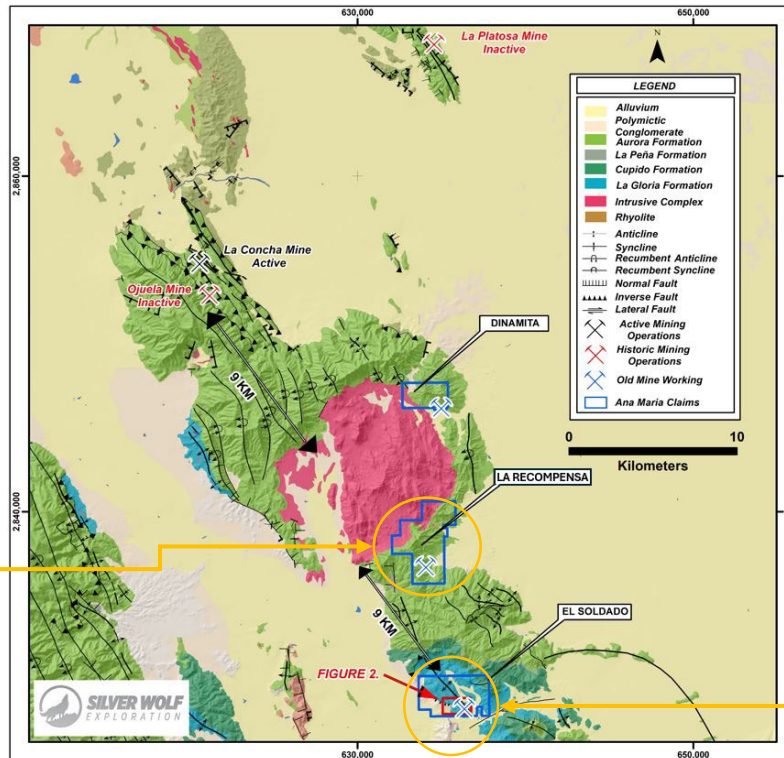
# CRD-SKARN GEOLOGICAL MODEL

*Ana Maria Property – Durango, Mexico.*



# PRIORITY TARGETS

*Ana Maria Property – Durango, Mexico.*



**LA RECOMPENSA  
CLAIM- SKARN  
TARGET  
DRILL READY**

**EI SOLDADO CLAIM - CRD  
Target  
Reconnaissance Drilling  
Complete – Follow up  
Mapping and Targeting**



# SKARN TARGET

## *Outcropping at the La Recompensa Claim*





# SKARN TARGET

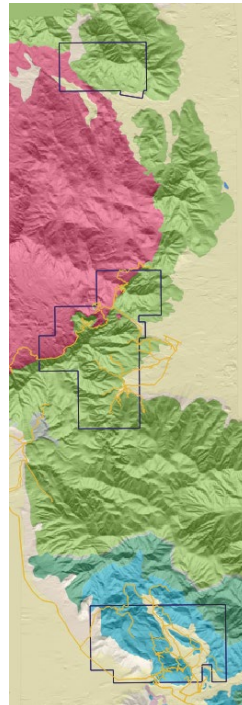
*La Recompensa*

*Datasets*

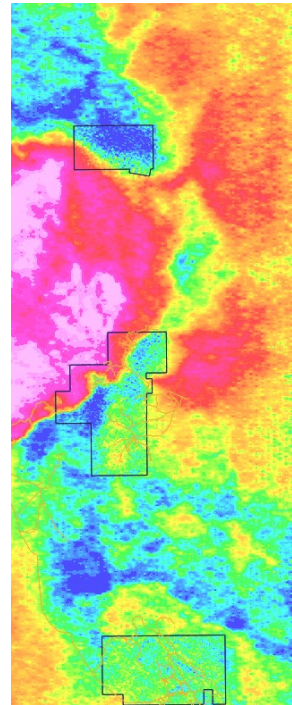
Sat Imagery



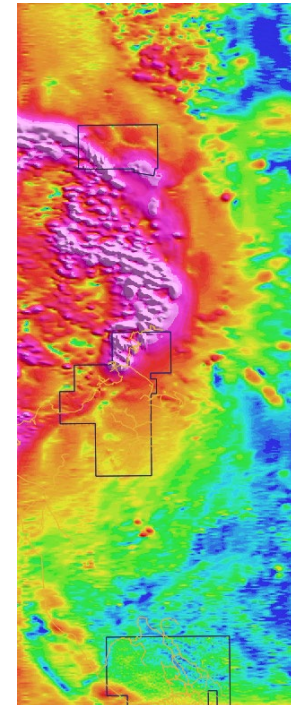
Geology



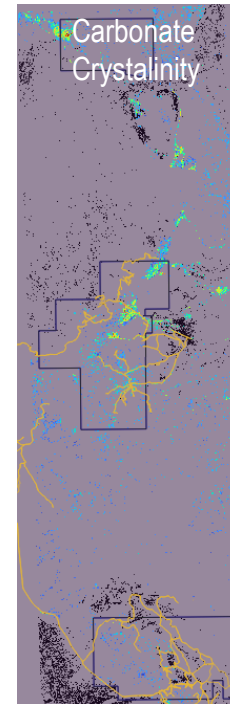
Radiometrics



Magnetics

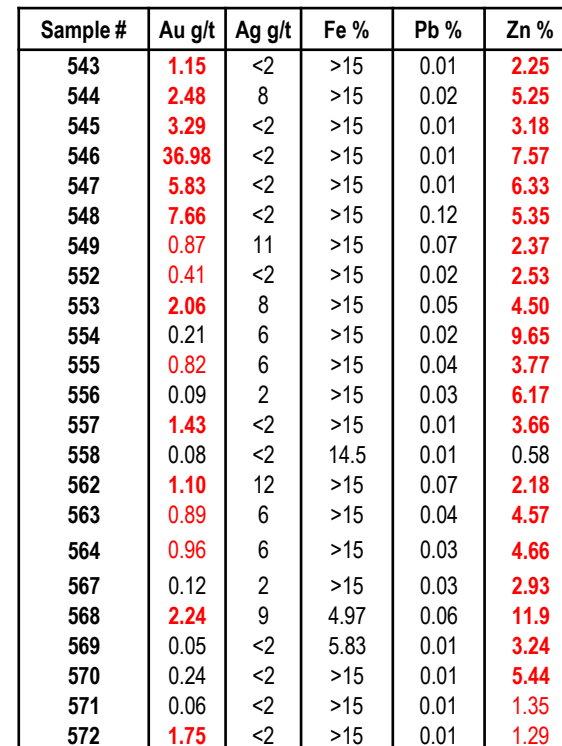


SWIR



## SKARN Target

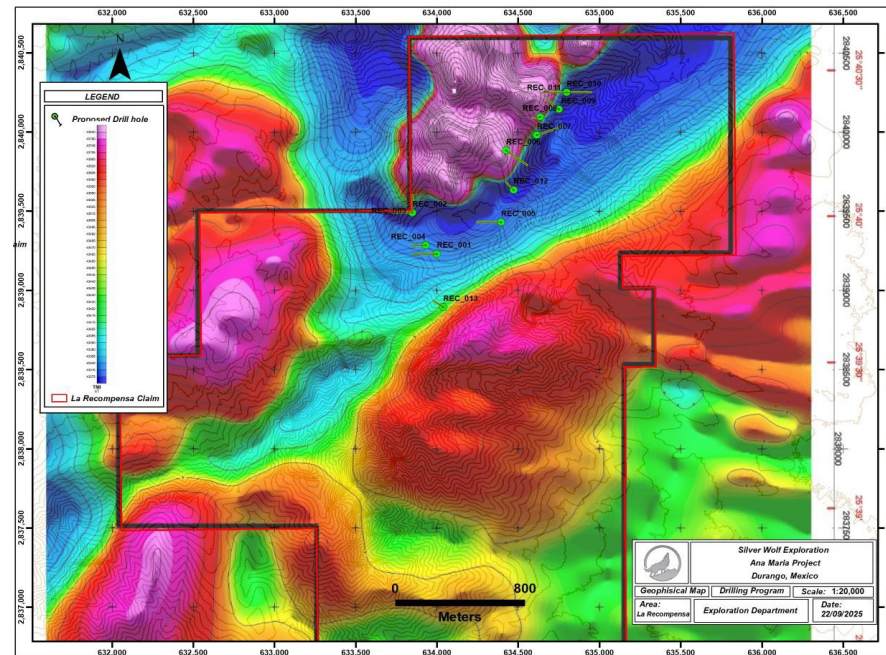
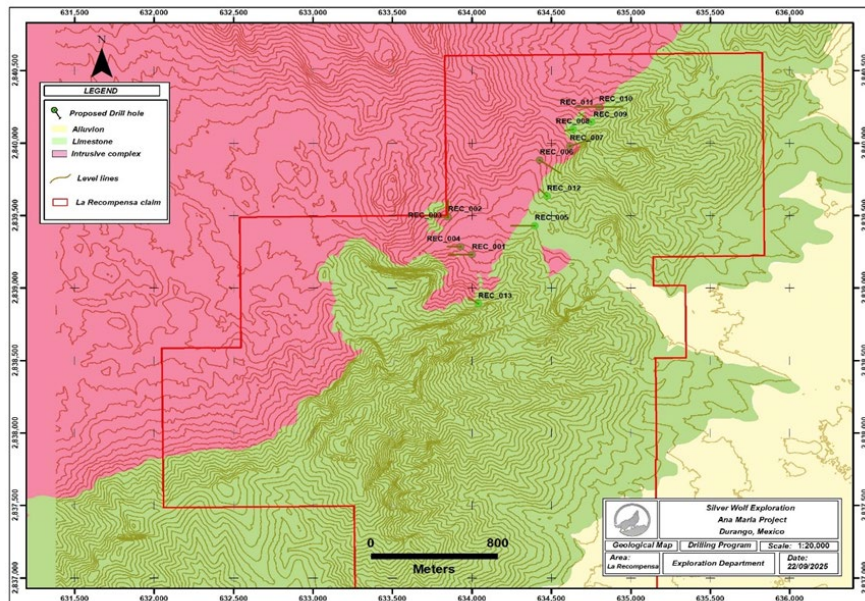
TSX.V:SWLF  
OTCQB:SWLFF





# PROPOSED DRILL PROGRAM

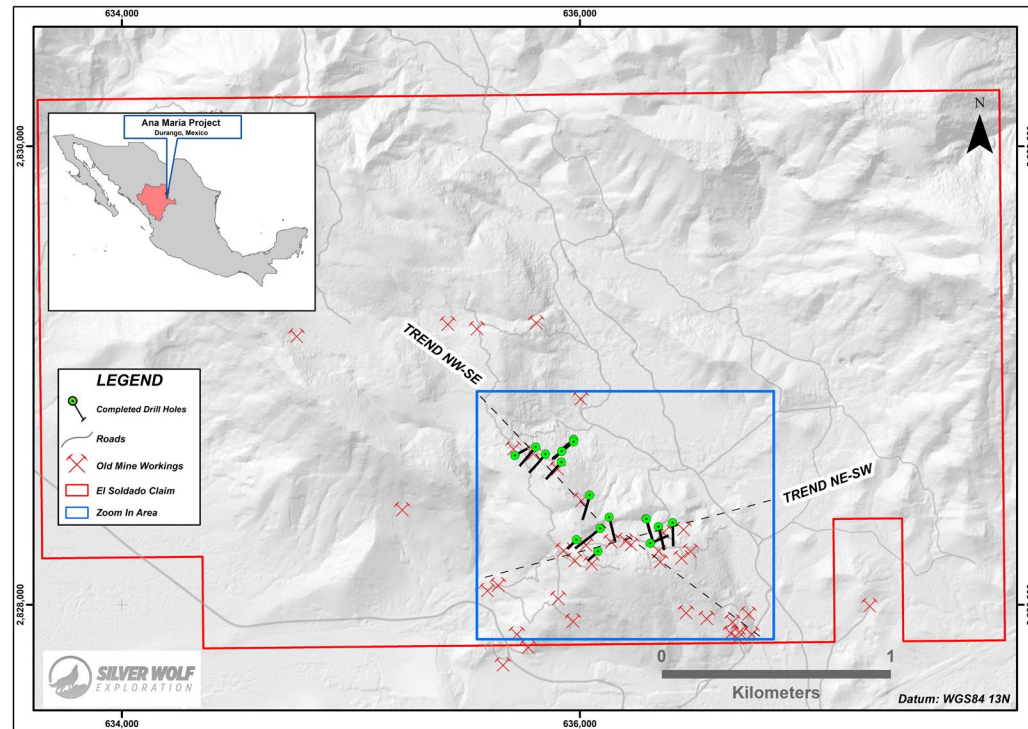
## 3000m over 13 holes



# DRILL PROGRAM AT THE EL SOLDADO CLAIM

## 17 holes at the CRD Target

- Discovered extensive CRD type hydrothermal mineralization and dolomitization – open at depth
- Identified several significant subvertical chimney breccias and flat lying mantos with anomalous Ag-Pb-Zn and pathfinder elements
- Very similar to Ojuela mine<sup>1</sup> (Historic 160M oz Ag producer)



<sup>1</sup> See footnotes in the Appendix



# DRILL PROGRAM AT THE EL SOLDADO CLAIM

## 17 holes at the CRD Target

- Brecciated limestone with calcite matrix and fractures filled with iron oxides
- Strong brecciation, calcite recrystallisation and carbonate veining with reddish iron-oxides



# CRD CHECKLIST

*Common to all Large known CRD Deposits*

Location - Main Street CRD/Porphyry belt	✓
Location - Top of carbonate section (room to grow)	✓
Ag (+400 g/t), Au, Zn, Pb, Cu, +Mn, As, W...	✓
Multiple mineralization and alteration stages	✓
Large scale zoning	✓
Presence of Felsite dikes	✓
Presence of Skarn	✓
Discordant geometry (= not syngenetic)	✓
Replacement mineralization	✓
High iron sphalerite	
Pyrite pseudomorphs after pyrrhotite	
Molybdenum mineralization	✓
Granitic Stock Contact Skarn = Target	✓

*Megaw, et al, 1996, 1998, 2020*

## Breccias and Mantos

TSX.V:SWLF  
OTCQB:SWLFF





# SIMILARITY TO OJUELA MINE<sup>1</sup>



- Discovered in 1598
- One of Penoles first mines in early 1900's
- Produced 160M ozs AgEq from underground operations at high grade

<sup>1</sup> See footnotes in the Appendix

# BOARD OF DIRECTORS

- **David Wolfin, Chairman & CEO:** Mr. Wolfin brings 35 years of experience in mining and finance. He is the President and CEO of Avino Silver and Gold mines and has been senior officer or director of several other mining companies throughout his career.
- **Peter Schriber, Director:** Mr. Schriber has extensive experience in merchant and commercial banking, specializing in corporate finance as well as acting as director and VP for a Canadian brokerage firm. He graduated with a commerce degree in Switzerland and entered a banking career in both Switzerland and Canada.
- **Stephen Williams, Director:** Mr. Williams, P.Eng, MBA, is currently the vice president of investor relations for Lundin Mining. Previously, he was a director at Canaccord Genuity Corp. in the metals and mining investment banking team, where he provided strategic advice to clients on acquisitions, mergers, and equity financings.
- **Peter Latta, President & Director:** Mr. Latta BSc, P.Eng, MBA, has over 15 years of operational, engineering, and commercial experience in the mining industry having worked on a variety of precious and base metals projects across 6 continents. He is also the VP technical services for Avino Silver and Gold Mines.
- **Honza Catchpole, Director:** Honza Catchpole is an exploration geologist with 15 years of experience working in Mexico, USA, Canada, Andean South America and Europe. He received his Ph.D. in Earth Sciences from the University of Geneva, Switzerland. He has extensive experience in mineral exploration with porphyry Cu, skarn (Zn-Pb-Ag-Cu), epithermal precious (Au-Ag) and base metal (Ag-Zn-Pb-Cu) deposits.



TSX.V:SWLF  
OTCQB:SWLFF

# MANAGEMENT

- **David Wolfin, Chairman & CEO:** Mr. Wolfin brings 35 years of experience in mining and finance. He is the President and CEO of Avino Silver and Gold mines and has been senior officer or director of several other mining companies throughout his career.
- **Peter Latta, President & Director:** Mr. Latta BSc, P.Eng, MBA, has over 15 years of operational, engineering, and commercial experience in the mining industry having worked on a variety of precious and base metals projects across 6 continents. He is also the VP technical services for Avino Silver and Gold Mines.
- **Rodney Stevens, VP Finance:** Mr. Stevens is a Chartered Financial Analyst ("CFA") charter holder with over a decade of experience in the capital markets, first as an investment analyst with Salman Partners Inc. and subsequently as a merchant and Portfolio Manager. While at Salman Partners, he became a top-rated analyst by StarMine on July 17, 2007 for the metals and mining industry. Over the course of his career, he has been instrumental in assisting in financings and mergers and acquisitions activities worth over \$1 billion in transaction value.
- **Nathan Harte, CFO:** Mr. Harte is a Canadian Chartered Professional Accountant (CPA) who brings a wealth of experience in both financial reporting and the mining sector. Prior to joining Avino in 2016, Nathan spent his professional career in public practice with Deloitte LLP, where he specialized in publicly-listed mining companies based in both Canada and the United States.
- **Carlos Rodriguez, VP Exploration:** Mr. Rodriguez M., P.Geo, graduated in 1984 from the University of Sonora in Hermosillo, Mexico with a degree in geology and from the Colorado School of Mines in 1998 with a Professional Degree in mineral exploration. He currently holds the position of Chief Operating Officer at Avino Silver & Gold Mines, a position he has held for the last 9 years.

## ADVISORY BOARD

- **Vic Chevillon, Advisor:** Vic brings over 50 years of exploration experience and is credited with 3 major deposit discoveries. Mr. Chevillon worked for Noranda Exploration Inc., leading the New World copper-silver-gold discovery in Montana. With Placer Dome Exploration he recommended the Getchell-Turquoise ridge district acquisition that enabled Placer Dome to control three of the four Nevada gold trends. Most recently, Mr. Chevillon was Vice President of Exploration for Levon Resources where he was credited with discovering the Cordero porphyry deposit in Chihuahua, Mexico. The Cordero deposit is one of the largest known silver resources in the world.
- **Terry Salman, Advisor:** Born in Montreal, he served as a sergeant with the US Marines during the Vietnam War before becoming a legend in mining finance. Terry worked with Nesbitt Thomson before leaving to form financial advisory firm Salman Partners, where he served as president, CEO, and co-director of research. Today, he is president and CEO of Salman Capital, Chair Emeritus of the Vancouver Public Library Foundation, and Honorary Consul General of the Republic of Singapore. Terry holds a BA from Chaminade University of Hawaii, an MBA from the University of Hartford, and an honorary doctorate from the B.C. Institute of Technology. He received the Order of Canada in 2020 and the Public Service Star from the Office of the President of Singapore in 2021.

## NEXT STEPS

### *Working Towards Discovery*

Skarn target on the La  
Recompensa claim


Integrated new  
geological information to  
layout 3000m 13 drill  
hole program

Drill 13 holes!

CRD target on the El  
Soldado claim

Identify and map other  
Breccias

Develop drill  
targets with new  
information and  
more depth



Potential  
Discovery

# INVESTMENT CASE

## *Silver Wolf Exploration Catalysts*

### MANAGEMENT

Experienced team  
with asset in familiar  
jurisdiction

### FIRST-MOVER

Blue-sky CRD/Skarn  
potential in prolific  
CRD/Skarn Belt –

### INFRASTRUCTURE

Easy access to  
infrastructure, skilled  
labor and discounted  
drilling

### SYNERGIES

Optionality for exit  
with other regional  
operators or Avino





# Silver Wolf Exploration

*A Greener Future Through Resource Discovery*

[PLATTA@silverwolfexploration.com](mailto:PLATTA@silverwolfexploration.com)

604-682-3701

# APPENDIX

## *Footnotes Slides 9, 12, 13 – Similarity to Ojuela Mine*

“Based on the results of our exploration drilling to date, we believe we have a geological model that closely resembles the world famous Ojuela mine<sup>1</sup>, located in proximity to our property<sup>2</sup>.” - Peter Latta, President of Silver Wolf Exploration Ltd.

News Release dated March 19, 2025: [Silver Wolf Provides 2025 Outlook and 2024 Highlights; Focused on Unlocking Ana Maria's Potential.](#)

1. Reference: The publication titled Mineralogical Record Vol. 34, No.5, 2003 titled: Famous Mineral Localities: The Ojuela Mine, Mapimí, Durango, Mexico by Thomas P. Moore, Peter K.M. Megaw
2. Please note that neighboring properties deposits do not necessarily apply to the current project or property being disclosed